

ADRAD

BEARWARD

SECTIONAL COOLING MODULES

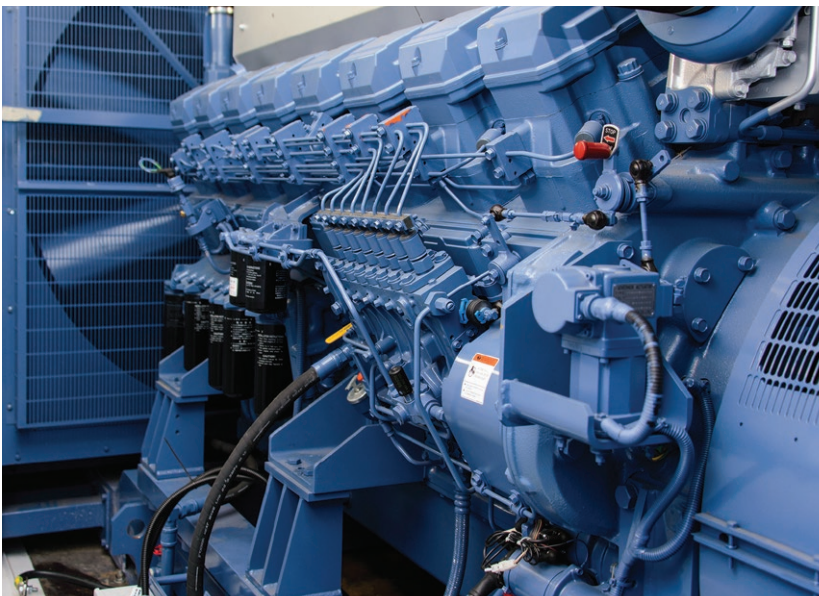
Bearward Cooling Modules have been a preferred industry standard to Power Generation OE suppliers for over 15 years!

The patented modular cores provide quick and easy serviceability, class leading thermal performance and unrivaled durability.

Highly Durable - reduction in strain through an innovative floating core design & rubber grommets that allow free thermal expansion & contraction

Easy Handling - compact design simplifies assembly, storage & shipment across the globe

Manufactured in the UK.



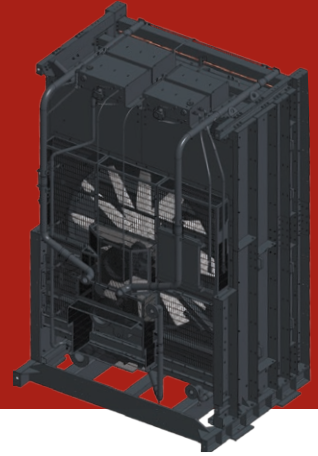
BENEFITS

- ✓ Thermal Performance - OE part guarantees no loss in cooling performance
- ✓ Floating Core - durable, no bolted gasket; reduces leak path & aids serviceability
- ✓ In Situ Core Removal / Replacement - radiator assembly can remain on the engine; no lifting equipment needed
- ✓ Reduced Engine Downtime - core sections are quick and easy to remove / replace, minutes rather than hours / days
- ✓ Maintenance - sections can be removed & cleaned, extending life & performance
- ✓ Cost Effective - single core sections can be replaced

ADRAD

BEARWARD

SECTIONAL COOLING MODULES



MODULAR CORES			
Core Size	Fitting Dia.	Section	Part No.
900 x 225 x 52	57mm	RAD / JW	BEA905CM
900 x 225 x 87	76mm	CAC	BEA904CM
900 x 225 x 106 x 10fpi	76mm	CAC	BEA902CM
900 x 225 x 106 x 14fpi	76mm	CAC	BEA910CM
1000 x 225 x 86	76mm	RAD / CAC	BEA903CM
1100 x 225 x 70	57mm	RAD / JW	BEA901CM
1200 x 225 x 52	57mm	RAD / JW	BEA911CM
1200 x 225 x 70	76mm	CAC	BEA912CM
1200 x 225 x 106	76mm	CAC	BEA913CM
1300 x 225 x 52	57mm	RAD / JW	BEA914CM
1300 x 225 x 70	76mm	CAC	BEA906CM
1300 x 225 x 70 x 14fpi	57mm	RAD / JW	BEA908CM
1300 x 225 x 70 x 16fpi	57mm	RAD / JW	BEA915CM
1300 x 225 x 87	76mm	CAC	BEA916CM
1400 x 225 x 53	57mm	RAD / JW	BEA909CM
1400 x 225 x 70 x 16fpi	57mm	RAD / JW	BEA907CM
1400 x 225 x 70 x 14fpi	57mm	RAD / JW	BEA917CM
1500 x 225 x 87	76mm	RAD / JW	BEA918CM
1600 x 225 x 70	57mm	RAD / JW	BEA919CM
1600 x 225 x 87	76mm	CAC	BEA920CM
1700 x 225 x 70	57mm	RAD / JW	BEA921CM



SEALS			
Part	ID	OD	Details
OUNI110	75mm	95mm	High Temp CAC (Up to 250 Deg)
OUNI111	57mm	77mm	Jacket Water
OUNI112	77mm	95mm	Jacket Water / CAC Outlet
OUNI113	75mm	95mm	High Temp CAC (230 - 280 Deg), Steel Reinforced



BEARWARD SEAL TOOL	
OUNI110	For Steel Reinforced Seals - Removal & Installation

Bearward_Cores_Adrad_Flyer2_0519

CONTACT YOUR LOCAL ADRAD DISTRIBUTOR:

ADRAD

For assistance locating a distributor, contact: 1800 882 043 or customerservice@adrad.com.au